

***KSuse***  
***Sender***  
***SOFTWARE***

## Content

|  |    |
|--|----|
| System requirements .....                  | 3  |
| Description of the program interface ..... | 4  |
| Gallery .....                              | 4  |
| General settings window.....               | 6  |
| Sending settings window .....              | 8  |
| Window "Additional Settings" .....         | 9  |
| Database window.....                       | 10 |
| Used libraries.....                        | 11 |

Use only English letters, numbers, point, hyphens, underscores in the names of paths, folders, files!

## System requirements

Compatibility: Windows 7 x64, 8.1 x64, 10 x64.

Required software:

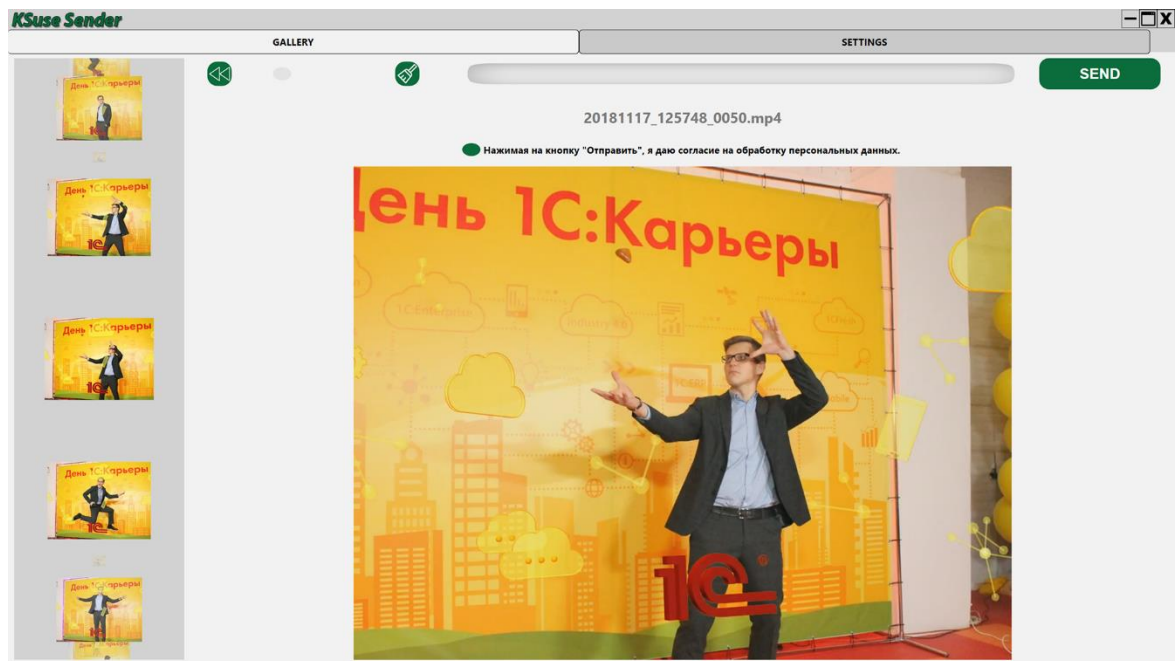
1. .NET Framework 4.7.2. <https://dotnet.microsoft.com/download/dotnet-framework-runtime>
2. Codec x264. Recommended K-Lite Codec Pack Mega.  
[https://codecguide.com/download\\_kl.htm](https://codecguide.com/download_kl.htm)

Additional software (may need to be installed):

1. Microsoft Visual C ++ 2015 Update 3 redistributable component (both x86 and x64 versions): <https://www.microsoft.com/en-us/download/details.aspx?id=53587>

## Description of the program interface

### Gallery



The video is added to the gallery immediately after the file appears in the monitored folders.

When you click on the image in the upper slider, it opens the corresponding video in the viewing block.

An email address is entered in the field (focus is always on it, there is no need to place the cursor in the field for keyboard input).

A button with a broom icon is used to clear the field with the mail address.

**Only files created or modified in the last 12 hours (by default) are displayed in the gallery!**



- enable / disable automatic rewind to the last photo



- open the last photo



- clear address

The web version of the gallery is also available.

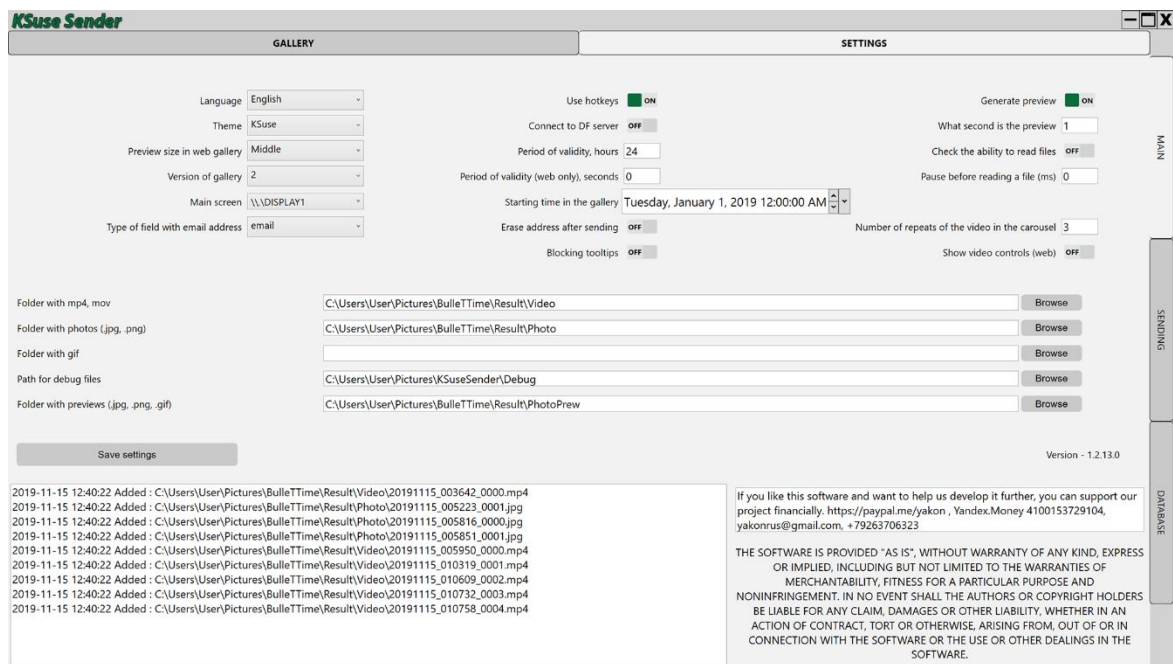


On any device connected to the same network as the computer with the KSuse Sender software, you must open any browser and enter the IP address of the computer with the KSuse Sender software in the address bar.

The web gallery and carousel addresses are displayed in the "Settings – Send".

For the web gallery to work correctly, you must allow access via the TCP protocol for port 80 in the firewall, or disable the firewall.

## General settings window



**Be sure to click "Save Settings" when changing values in this window before switching to another window!**

“Language” - Select the interface language.

“Theme” - Select the color palette of the interface.

Below is a selection of paths from which the program reads images and videos for the gallery.

**A folder with previews (small jpg) is required!**

**After saving the new values of the paths, you must restart the program!**

If your photo installation creates only mp4 files without previews, the program itself creates previews for the video, if the corresponding option is enabled.

In the "What second is the preview" option the number of second of the frame is entered from which it is used as a preview.

"Main screen" - allows you to move the program window to another monitor.

“Version of gallery” - a choice of two layout options for the web gallery.

You can further limit the files displayed in the gallery by setting the start date and time.

The gallery also has another limitation - the number of hours from the current date to the date of creation or modification of the file (the maximum value of them). This quantity can be changed

in the field “Period of validity, hours”. The default value is 12. Videos older than the specified number of hours will not be displayed in galleries.

"Period of validity (web), seconds" - Videos older than the specified number of seconds will not be displayed on web pages.

You can pause between detecting photos and adding them to the processing queue, which will prevent the addition of temporary files.

For the field types “email” and “text”, a different virtual keyboard is displayed. Validation for compliance with the format is used for the field with the type “email”, but there is no autocomplete on iOS devices.

“Erase the address after sending” - automatic cleaning of the field with the address immediately after sending.

“Blocking tooltips” - disable autocomplete.

"Show video controls (web)" - displaying controls on the pages "last video" and "carousel".

## Sending settings window

In the "Email From" field, you must enter the e-mail from which the sending will be made.

When using an SMTP server, the email address must be exactly the same as in the settings of the mailbox being used.

To send via SendGrid, you need to create an API key in your account and copy it to the program settings.

The "Automatic resending" option allows automatic repeated attempts to send messages with the "Error" status. Attention! Sharp increase in traffic volume with unstable internet connection is possible.

**It is necessary to fill in both text and html version of the letter!**

In this window, you can see the links that open the web gallery and web carousel.

Settings above the horizontal line are common to all letter templates. The remaining settings are determined individually for each template.

Emails are sent using the template selected on this page.

When the program starts, the one that was last saved will be automatically selected.



## Window "Additional Settings"

**KSuze Sender**

**GALLERY**

Export letter template Import letter template Save settings Additional settings

From <email> Konstantin <yakonrus@gmail.com>

Send through SendGrid

SendGrid API Key

Smtp port

Mail server

Login

Password

SSL (TLS)

SMTP timeout (in seconds)

Automatically resend

Send photo

Send gif

Send mp4

Show agreement ☒ ON

Default consent ☐ OFF

Send without consent ☐ OFF

**SETTINGS**

Template: 3

Web gallery: <http://192.168.18.120/>, <http://192.168.206.193/>,  
 Web carousel: <http://192.168.18.120/c/>, <http://192.168.206.193/c/>,  
 Last video: <http://192.168.18.120/last/>, <http://192.168.206.193/last/>

| Name      | Show?                    | Print?                   | Font  | Font style | Font size (em) | Font color | Stroke size (px) | Stroke color | Indent left (%) | Indent right (%) | Required field                      |
|-----------|--------------------------|--------------------------|-------|------------|----------------|------------|------------------|--------------|-----------------|------------------|-------------------------------------|
| ID        | <input type="checkbox"/> | <input type="checkbox"/> | Arial | Regular    | 14             | Black      | 0                | Black        | 10              | 90               | <input type="checkbox"/>            |
| Name      | <input type="checkbox"/> | <input type="checkbox"/> | Arial | Regular    | 14             | Black      | 0                | Black        | 10              | 90               | <input type="checkbox"/>            |
| Last name | <input type="checkbox"/> | <input type="checkbox"/> | Arial | Regular    | 14             | Black      | 0                | Black        | 10              | 90               | <input type="checkbox"/>            |
| Phone     | <input type="checkbox"/> | <input type="checkbox"/> | Arial | Regular    | 14             | Black      | 0                | Black        | 10              | 90               | <input checked="" type="checkbox"/> |

Save settings

Text of link to agreement  
 Нажимая на кнопку "Отправить", я даю согласие на обработку персональных данных.

Text of agreement  
 Текст согласия

In this window, you can choose which additional data entry fields to display in the web gallery.

The collected data is contained in the exported xls file.

It is also possible to turn on printing of the entered data on photos choosing the position, font, and color of labels.

Additional fields can be renamed and made mandatory.

## Database window

| Send | Date                | To             | Count | File | Status               | Repeat       |        |
|------|---------------------|----------------|-------|------|----------------------|--------------|--------|
|      | 2019-10-22 01:11:29 | yakon@inbox.ru | 1     | 3    | video_0137.2         | Sending      | Repeat |
| Send | 2019-10-21 15:13:39 | yakon@inbox.ru | 1     | 3    | Video_0136 — копия   | Sended       | OK     |
| Send | 2019-10-06 15:33:42 | yakon@inbox.ru | 1     | 3    | 20191006_143649_0003 | Missing file |        |
| Send | 2019-10-04 23:31:54 | yakon@inbox.ru | 1     | 3    | 20181117_125748_0050 | Sended       | OK     |
| Send | 2019-10-04 23:31:47 | yakon@inbox.ru | 1     | 3    | 20181117_105035_0006 | Sended       | OK     |
| Send | 2019-10-04 23:31:42 | yakon@inbox.ru | 1     | 3    | 20181117_104947_0005 | Sended       | OK     |
| Send | 2019-08-01 11:47:12 | yakon@inbox.ru | 0     | 3    | 20190801_110503_0000 | Missing file |        |
| Send | 2019-08-01 11:46:52 | yakon@inbox.ru | 0     | 3    | 20190801_110503_0001 | Missing file |        |

In this window, you can see the status of all sent letters in the selected date range and resend if necessary.

The width of the columns can be changed by moving the separators in the table header.

The “Send All” button re-sends all emails for the specified date interval except those already sent.

In the table you can change the email address of the recipient and the number of the template.

You can delete an error line by selecting and pressing the Delete key, or by pressing the X button in the desired line.

Black number - total emails

White number - sending

Green number - sent

Red number - errors

## Used libraries

Icons made by Freepik from [www.flaticon.com](http://www.flaticon.com) is licensed by CC 3.0 BY

<https://www.freepik.com/>

Icons made by Vitaly Gorbachev from [www.flaticon.com](http://www.flaticon.com) is licensed by CC 3.0 BY

<https://www.flaticon.com/authors/vitaly-gorbachev>

Icons made by Pixel perfect from [www.flaticon.com](http://www.flaticon.com) is licensed by CC 3.0 BY

<https://www.flaticon.com/authors/pixel-perfect>

<https://www.flaticon.com/>

<http://creativecommons.org/licenses/by/3.0/>

<https://github.com/aspnet/EntityFramework6/wiki>

<https://www.newtonsoft.com/json>

<https://github.com/tonyqus/npoi>

<https://github.com/sendgrid/sendgrid-csharp>

<https://github.com/icsharpcode/SharpZipLib>

<https://system.data.sqlite.org/index.html/doc/trunk/www/index.wiki>

<https://dotnet.microsoft.com/>

<https://www.ffmpeg.org/>

<http://www.helix-toolkit.org/>

<https://github.com/dlemstra/Magick.NET>